

The ESSEX



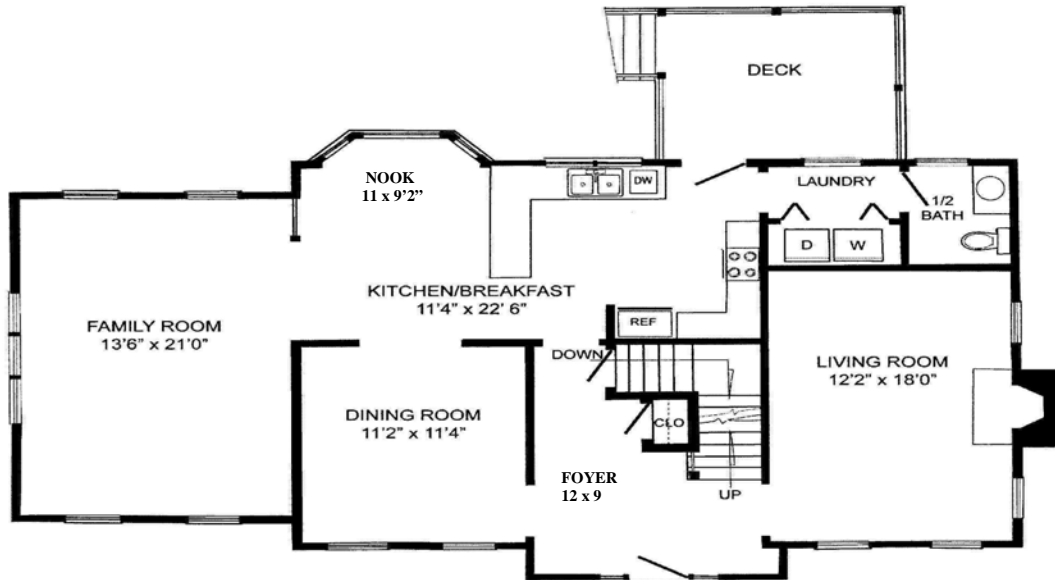
The 2,513 square foot Expanded Essex is a Gable-Front Colonial with the formal living room with fireplace and dining room on either side of the two story foyer. The spacious kitchen is open to the breakfast area which is open to the large family room also has a lovely bay window overlooking the back yard . The full sized laundry room and 1/2 bath sit adjacent to the kitchen and have access to the rear deck.

A desired turned staircase leads to a roomy master bedroom with separate private bath and ample closets. Three well appointed bedrooms, a hall bath complete this lovely plan.

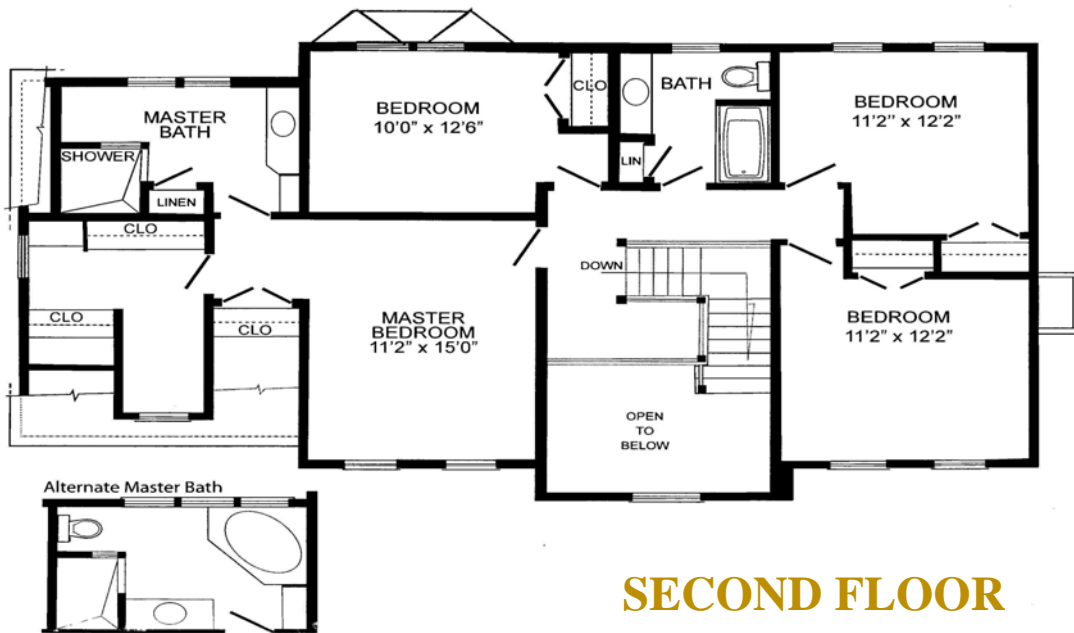


Built by Habitech, Inc. and exclusively marketed by Re/Max Colonial—Groton, MA

The EXPANDED ESSEX



FIRST FLOOR



SECOND FLOOR



Floor plans and dimensions are only approximate and may vary in the construction process. Optional features may be shown and priced accord-