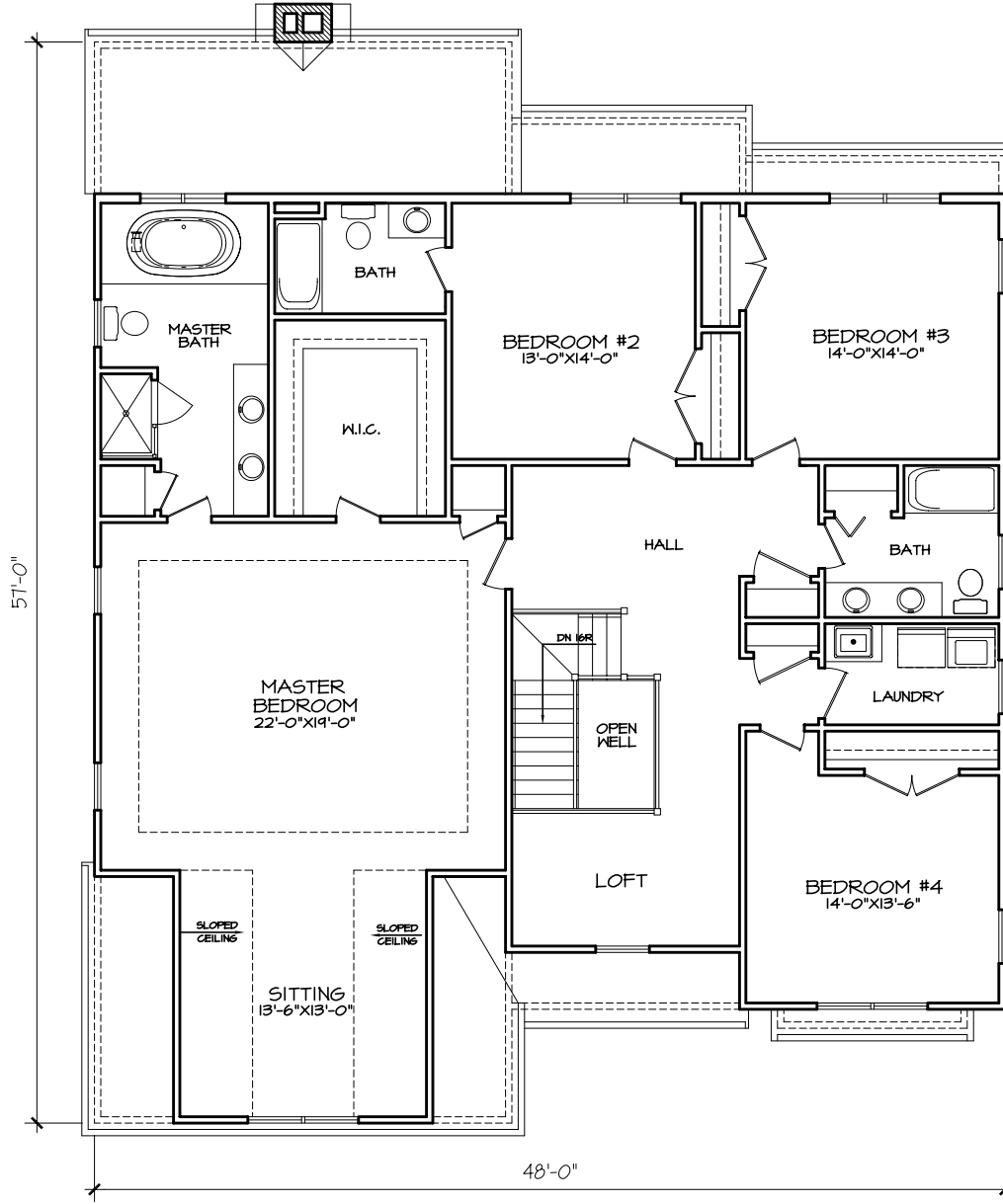


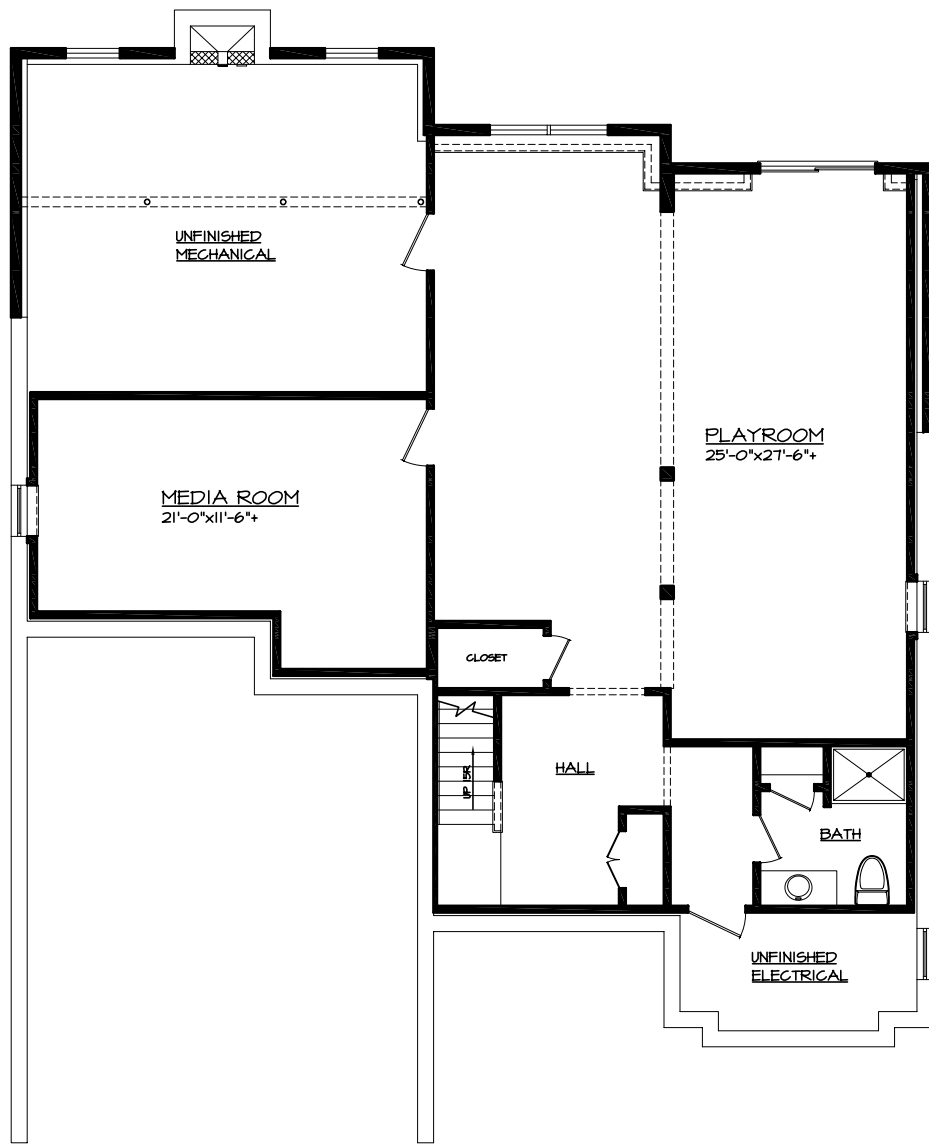
FIRST FLOOR PLAN

STYLE: Colonial	SQ. FOOTAGE: 1,848	PLAN #: 20090079
# RMS: 11	# BEDRM: 5	# BATHS: 5 FULL
PATH: G:\20090079_Rockwood\20090079_mkt		
NOTES:		
<p>These plans are schematic and are not to be used for construction. All dimensions and square footages are approximate and subject to change without notice.</p> <p>© 2009 HPA Design, INC.</p>		



SECOND FLOOR PLAN

STYLE: Colonial	SQ. FOOTAGE: 2,026	PLAN #: 20090079
# RMS: 11	# BEDRM: 5	# BATHS: 5 FULL
PATH: G:\20090079_Rockwood\20090079_mkt		
NOTES:		
<p>These plans are schematic and are not to be used for construction. All dimensions and square footages are approximate and subject to change without notice.</p> <p>© 2009 HPA Design, INC.</p>		



BASEMENT PLAN

STYLE: Colonial	SQ. FOOTAGE: 1,290	PLAN #: 20090079
# RMS: 11	# BEDRM: 5	# BATHS: 5 FULL
PATH: G:\20090079_Rockwood\20090079_mkt		
NOTES:		
<p>These plans are schematic and are not to be used for construction. All dimensions and square footages are approximate and subject to change without notice.</p> <p>© 2009 HPA Design, INC.</p>		