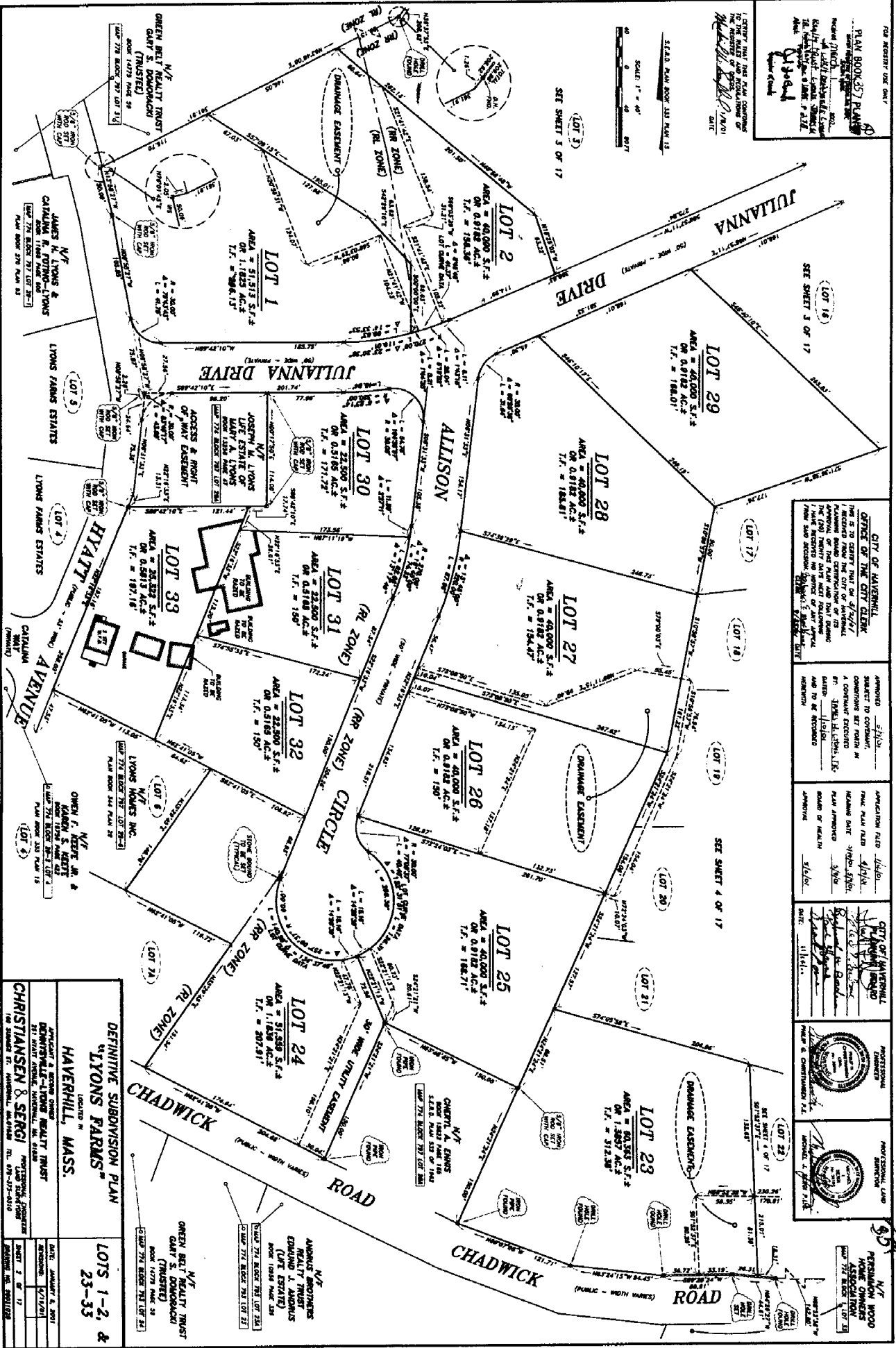
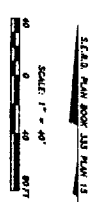


FOR REVIEW ONLY
PLAN BOOK 37 PLANS
 I, **John J. ...**
 REGISTERED PROFESSIONAL ENGINEER
 No. 10000, State of Massachusetts
 do hereby certify that the above described
 subdivision of land is in accordance with
 the provisions of Chapter 40A of the
 General Laws of the Commonwealth of
 Massachusetts, and that the same
 has been approved by the
 City of Haverhill.



CITY OF HAVERHILL
OFFICE OF THE CITY CLERK
 THIS IS TO CERTIFY THAT ON 5/25/21
 I RECEIVED FROM THE CITY OF HAVERHILL
 A COPY OF THE ABOVE DESCRIBED
 SUBDIVISION PLAN AND THAT THE
 SAME HAS BEEN RECORDED IN THE
 CITY CLERK'S OFFICE ON 5/25/21.

APPROVED: **John J. ...**
 REGISTERED PROFESSIONAL ENGINEER
 No. 10000, State of Massachusetts
 I HEREBY APPROVE THE ABOVE
 DESCRIBED SUBDIVISION PLAN
 AND THE RECORDING THEREOF
 ON 5/25/21.

CITY OF HAVERHILL
REGISTERED PROFESSIONAL ENGINEER
John J. ...
 No. 10000, State of Massachusetts
 I HEREBY APPROVE THE ABOVE
 DESCRIBED SUBDIVISION PLAN
 AND THE RECORDING THEREOF
 ON 5/25/21.

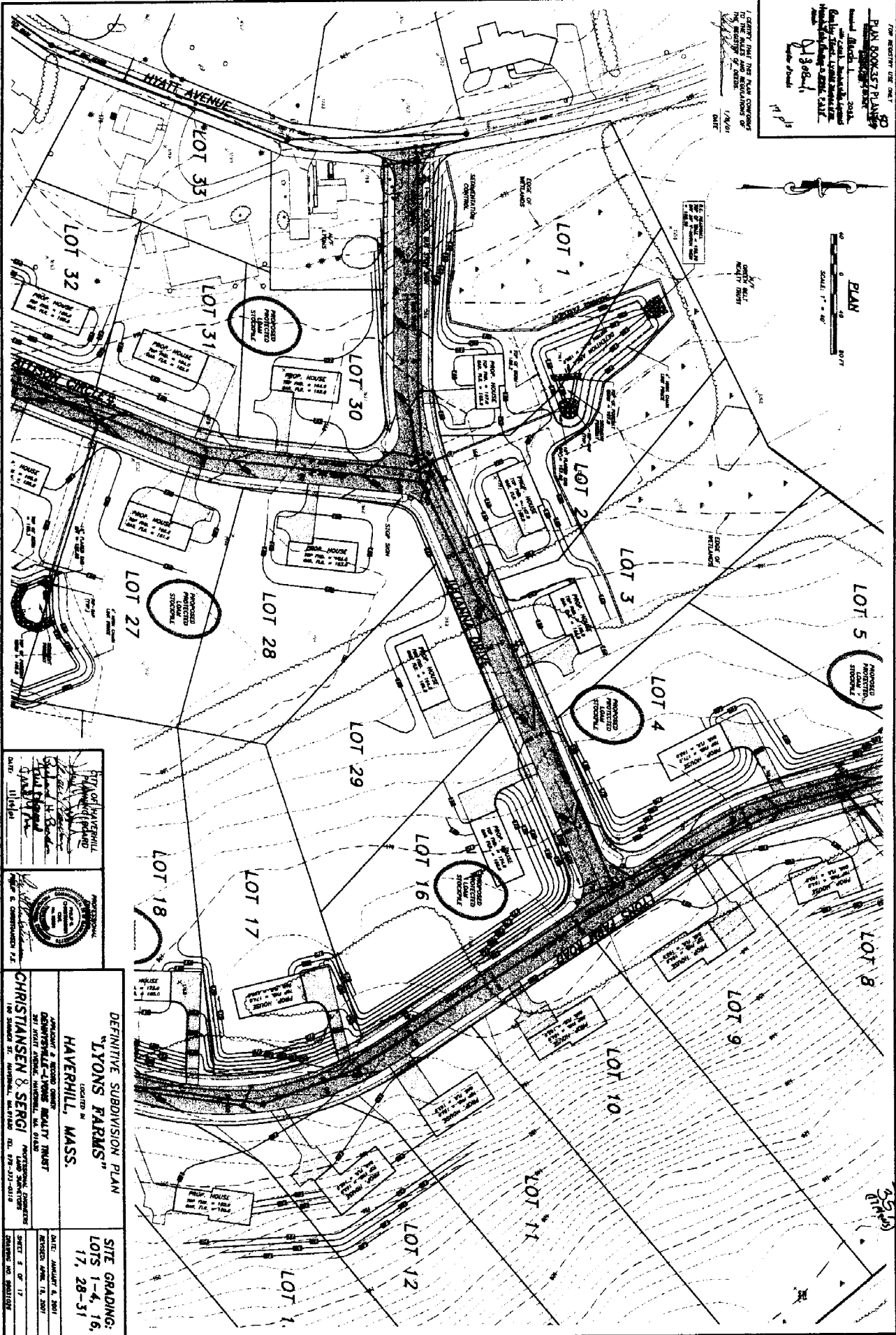
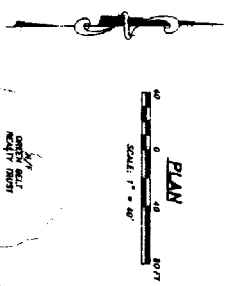
PROFESSIONAL ENGINEER
John J. ...
 No. 10000, State of Massachusetts
 I HEREBY APPROVE THE ABOVE
 DESCRIBED SUBDIVISION PLAN
 AND THE RECORDING THEREOF
 ON 5/25/21.

PROFESSIONAL ENGINEER
John J. ...
 No. 10000, State of Massachusetts
 I HEREBY APPROVE THE ABOVE
 DESCRIBED SUBDIVISION PLAN
 AND THE RECORDING THEREOF
 ON 5/25/21.

DEFINITIVE SUBDIVISION PLAN
"LYONS FARMS"
 HAVERHILL, MASS.
GREEN BELT REALTY TRUST
 GARY S. DOWNUMSKI (TRUSTEE)
CHRISTIANSEN & SERGI
 REGISTERED PROFESSIONAL ENGINEER
 No. 10000, State of Massachusetts
 I HEREBY APPROVE THE ABOVE
 DESCRIBED SUBDIVISION PLAN
 AND THE RECORDING THEREOF
 ON 5/25/21.

DATE: 5/25/21	BY: JOHN J. ...
PROJECT: LYONS FARMS	NO. 10000
SHEET 2 OF 17	

FOR REVISION USE ONLY
PLAN BOOK-57 PLAN 53
 Revised March 1, 2015
 The Civil, Mechanical, Electrical, Plumbing, and Fire Protection Engineers of the State of Massachusetts
 M30801
 Date: 1/1/15



CITY OF HAVERHILL
 PLANNING BOARD
 APPROVED
 DATE: 11/18/14

PROFESSIONAL
 ENGINEER
 REGISTERED PROFESSIONAL ENGINEER
 STATE OF MASSACHUSETTS
 NO. 10000
 CHRISTIANSEN & SERGI

DEFINITIVE SUBDIVISION PLAN
"LYONS FARMS"
 LOCATED IN
HAVERHILL, MASS.

ADVANTAGE & SECOND OWNER
 DENVERVILLE-LYONS REALTY TRUST
 BY TITLE COMPANY, INCORPORATED IN ILLINOIS
 180 SUMMIT ST. NAPERVILLE, ILLINOIS TEL. 708-333-0418

DATE: JANUARY 8, 2015
 REVISION: NONE TO DATE

SITE GRADING:
 LOTS 1-4, 16,
 17, 28-31

SHEET 3 OF 17
 DRAWING NO. 05010105

5/3/15
 (initials)