

FOR REVISION ONLY

I HEREBY CERTIFY THAT THIS PLAN HAS
 BEEN PREPARED IN ACCORDANCE WITH THE RULES
 AND REGULATIONS OF THE REGISTERED
 PROFESSIONAL ENGINEERS OF MASSACHUSETTS

THE BOARD OF ARCHITECTS AND LAND
 SURVEYORS OF MASSACHUSETTS

DATE: April 2011

TOWN OF AMESBURY
 ZONING REGULATIONS
 (RESIDENTIAL)

ZONE: R20
 LOT SIZE: 20,000 S.F.
 MINIMUM: 12,500 S.F.

MAXIMUM SETBACKS
 FRONT: 40 FT.
 SIDE: 20 FT.
 REAR: 20 FT.

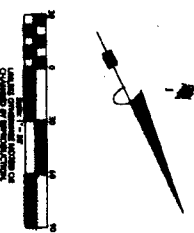
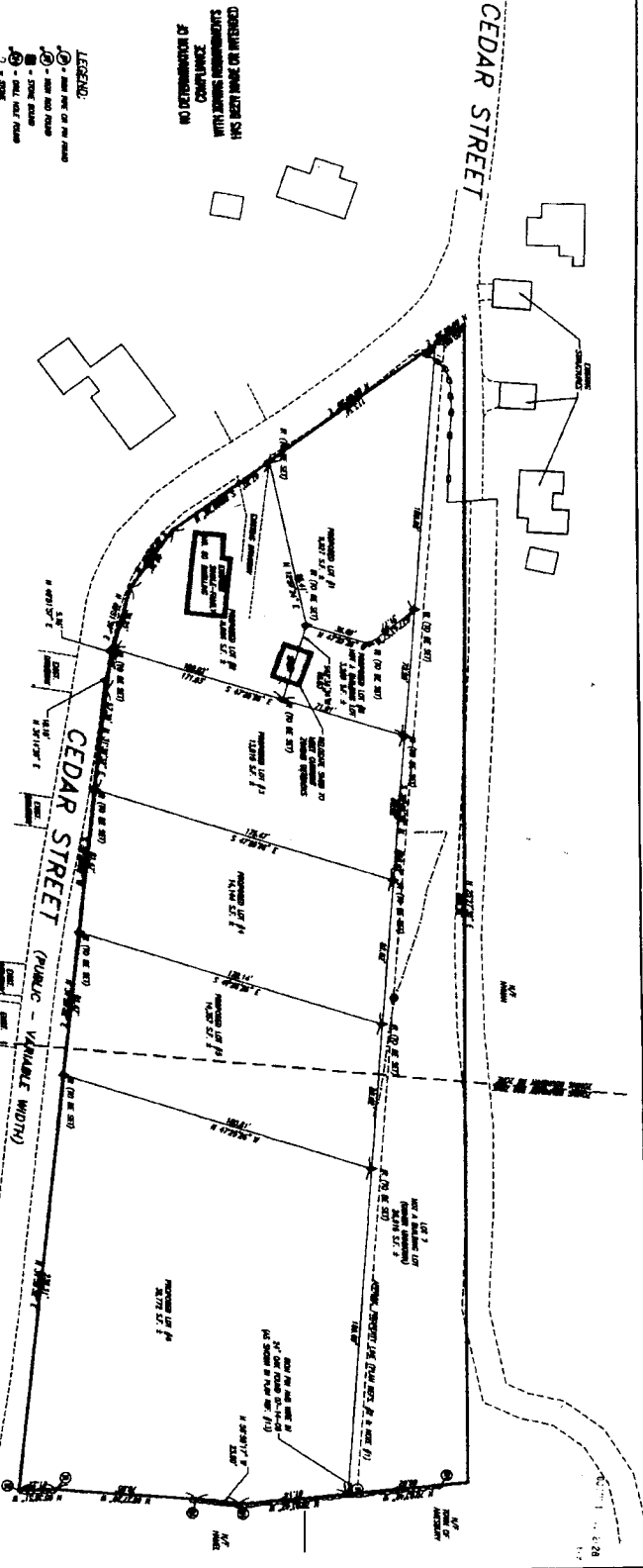
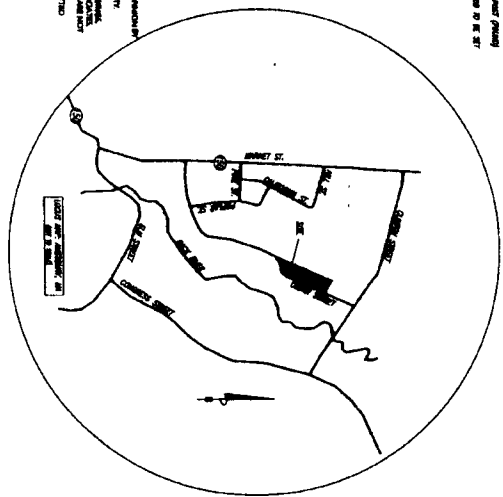
DESIGN REFERENCE
 MASS COUNTY PLANNING & DEVELOPMENT
 BOARD ZONING REG. #13

PLAN REFERENCES
 1. PLAN FOR LOTS 1-11
 2. PLAN FOR LOTS 12-17
 3. PLAN FOR LOTS 18-21

AMERICAN ASSOCIATES, INC.
 19 CENTRAL STREET - BRIDGE MA 01922
 TEL: 978-326-1234 FAX: 978-326-1235
 WWW.AAASSOCIATES.COM

NO DETERMINATION OF
 COMPLIANCE
 WITH ZONING REGULATIONS

LEGEND
 - - - - - PROPERTY LINE
 - - - - - EASEMENT
 - - - - - CURB
 - - - - - SIDEWALK
 - - - - - DRIVEWAY



FORM A
SUB-DIVISION PLAN
 FOR
AMESBURY, MASSACHUSETTS
(ASSESSORS MAY 27 LOT 2)
 PROPERTY OWNER
COTE CEDAR STREET
NONNIEE TRUST
 PREPARED FOR
BRADKUL, INC.
11A MACKY STREET
AMESBURY, MA 01913
 P.L.S. &K. SCALE 1"=50'
 DRAWING BY: JMW DATED: 3/27/10
 REVISIONS BY: JMW/JSK REVISION: 7/14/08 504/08

AMERICAN ASSOCIATES, INC.
 19 CENTRAL STREET - BRIDGE MA 01922
 TEL: 978-326-1234 FAX: 978-326-1235
 WWW.AAASSOCIATES.COM

SHEET 1 OF 1